

**BIG EOFY SAVINGS ON WELDING GEAR, TOOLS AND EQUIPMENT**

**WIN!**

Enter the draw to Win this Milwaukee M18 Fuel™ 3 Piece Power Pack. Earn one entry with every transaction that includes an item from this catalogue.



**POWERTEC® 1500S INDUSTRIAL MIG RTW PACKAGE**

- 500Amp industrial MIG Inverter with digital display
- Comes Ready to Weld – inc. LF56D Wire
- Feeder, MIG Gun, Cables, Drive Rolls & Gas Regulator
- Suitable for industrial MIG applications & MIG processes, Synergic programs for Steel, S/S, Aluminium and Flux cored wires.

**BONUS!**

Bonus - Viking™1740 Auto-Darkening Helmet and Backpack



SAVE \$1300  
**\$6999**

**HOT PRICE!**

20095421

**FRONIUS MAGIC WAVE 230I G/W/F AC/DC TIG WELDER**

Silky smooth welding. The MagicWave features an extremely robust design and a self-explanatory operating concept with bluetooth. Comes with Active Wave which makes TIG AC welding a much quieter business. The integrated digital signal processor always computes the waveform that will permit the highest possible arc stability with the lowest possible noise-emission levels in real time..



SAVE \$320  
**\$8999**

20086960

**HOT PRICE!**

**Fronius**

**6.8KVA DIESEL MINE SPEC GENERATOR YANMAR POWERED**

Built tough, this diesel generator is fitted with all the specifications required for the mine site and is first when it comes to mining safety.

- Power Rating: 6.8 kVA
- Cont. Output Watts: 5400
- Engine Model: Yanmar L100N5
- Phase: 1-Phase
- Engine Horsepower: 8.8
- Starting System: Electric
- Fuel Tank Capacity: 36L
- Noise Level @ 7m: 89dBA
- Outlets: 2 x 15Amp
- Operation Hours @ 80% Load: 21hrs (approx)
- Diam.: 876x546x700 (L x W x H)
- Weight: 160 kg



SAVE \$140  
**\$9259**

20083631

**HOT PRICE!**

**40L STAINLESS STEEL VACUUM**

- 1400W high power motor
- 40L stainless steel container
- Vacuum: 19kpa
- Air Flow: 57L/s
- Wet and dry vacuum cleaner
- Built-in easy drainage system
- Swivel castors and large rear wheels provide ease of movement in any direction
- 4.8m power cord with cord hook
- Removable steel handle for easy storage
- Powerful blower port instantly converts vacuum to power blower

SAVE \$90.00  
**\$239.00**

20096186

Only 1 available.



**DOMINATOR 1066 PIECE 26 DRAWER WORKSHOP**

99 Piece LOK-ON™ Sockets and Accessories, 37 Piece 3/4" Drive Sockets & Accessories, 30 Piece Combination Spanners, 27 Piece Reverse Gear Spanners, 186 Piece Screwdriver & Fastening Tray, 116 Piece Hex / TORX® Keys & Sockets, 11 Piece Pliers & Riveters, 20 Piece Striking/Prying & Punches, 19 Piece Cut/Hook/Scrape Tray, 58 Piece LOK-ON™ Impact Sockets and Accessories, 4 Piece Adjustable Wrench Tray, 3 Piece Locking Pliers, 18 Piece Circlip Pliers, 64 Piece Deep Sockets, 13 Piece VDE & Test Tray, 87 Piece Tap & Die Set, 25 Piece Air Tools, 24 Piece T-Handles, 15 Piece Measuring & Electrical Tray, 8 Piece Jumbo Spanners, 60 Piece PTA Tray, Box components.



SAVE \$500  
**\$9499.00**

**HOT PRICE!**

**KINCROME** 20095944



### TRANSMIG 220I POWER PACK

A self-contained single phase multiprocess welding inverter that is capable of performing GMAW/ FCAW (MIG), MMAW (Stick) and GTAW (Lift TIG) welding processes. Equipped with an integrated wire feed unit, voltage reduction device (VRD applicable in Stick mode only), digital voltage and amperage meters, and a host of other features for the welding professional.



**SAVE \$200**  
**\$1549**

20095008  
\*Bonus Gas Offer May require cylinder deposit.

### TRANSMIG 185 ULTRA POWER PACK

Features an impressive AUTO SET function that allows the user to weld like a Pro with no previous welding experience necessary. Experienced welders can customise their settings according to their technique and other factors.

Easily return to your previous weld thanks to a sophisticated Memory Function, or save up to 9 of your favourite weld settings!



**SAVE \$100**  
**\$1699**

20095007  
\* Bonus Gas Offer May require cylinder deposit.

### ESAB ARISTO MIG 4004I PULSE WELDER

High Duty Cycle – suitable for long runs. Wide mains input tolerance: 380 – 440 V +/- 10% Generator compatible – for on-site use. Standby Function – energy-saving system. Pre-programmed synergic lines to ensure optimum settings with a wide choice of materials, wire dimensions and gas combinations.



**SAVE \$200**  
**\$12099**

20093752

**HOT PRICE!**



### WELDSKILL 205 AC/DC POWER PACK

Everything you need in one pack! Same great features and robust power as its predecessor, compacted down into a smaller, lighter and more portable TIG Inverter that weighs a slight 12kg.



**SAVE \$95**  
**\$1800**

20095005  
\* Bonus Gas Offer May require cylinder deposit.

### ESAB DUAL SHIELD PRIME SEAMLESS CORED MIG WIRE

Dual Shield Prime offers a range of non-copper-coated laser welded seamless cored wires that provide significant benefits. The unique formulation provides you with the best welding solution available. An exclusive manufacturing process produces a high quality, laser welded, seamless wire without the need for copper plating, resulting in superior quality, and the durability needed to handle any job.

Diffusible hydrogen level is consistently below 4ml/100g of deposited weld metal and with the seam of the wire being laser welded this ensures no moisture pick up. There wire is not copper coated which means there is no chance of copper flakes contaminating feed liners, torches and contact tips. Dual Shield Prime 81Ni1M is designed to weld high strength steels (>500 MPa, >72 ksi yield strength) and provides excellent impact toughness down to -60 degrees C. Dual Shield Prime 81Ni1M H4 is designed to be used with Ar/CO2 (M21) shielding gas mixtures.

DUAL SHIELD PRIME 81NI H4 1.2MM 15KG: \$159 **SAVE \$10**  
20094226

DUAL SHIELD PRIME 81NI H4 1.6MM 15KG: \$149 **SAVE \$40**  
20093793



### INDUSTRIAL GASES - FAST, RELIABLE & LOCAL

• Acetylene • Argon • LPG Vapour • Welding Gases • Oxygen • Forklift Gas  
Never pay rent again !No rental contract. Deposit refunded on return.

The only ASU (Air Separation Unit) in Mackay means we are capable of fast, reliable production and service locally. Our quality assured products are available for pickup or via our delivery service to Mackay, Whitsunday's and the Bowen Basin.



### TRADE N GO GAS™

		ARGON	MIG GAS	ACETYLENE	OXYGEN	NITROGEN	BEER GAS
<b>D SIZE</b>	Gas Price	\$99	\$99	\$99	\$69	\$69	\$69
	Deposit	\$200	\$200	\$200	\$200	\$200	\$200
<b>E SIZE</b>	Gas Price	\$159	\$159	\$159	\$129	N/A	N/A
	Deposit	\$340	\$340	\$420	\$340	N/A	N/A



**POWERCRAFT WELDER 191C MIG PACKAGE**

Powercraft 191C 190Amp single phase 3in1 MIG/Stick/TIG Welder with 10amp input supply  
Powercraft Electronic Welding Helmet  
Redline Traditional Flame Retardant Jacket (Size XL)  
Lincoln Gloves Grey 390mm  
1 x Roll Steelcore 71T-GS  
MIG Wire 0.9mm x 4.54kg



SAVE \$100

**\$1169**

20095423

**LINCOLN ELECTRIC**

**POWERCRAFT® 200M (200AMP/10AMP) 4IN1 MULTI-WELDER**

- 200 amp 240V / 10amp multi-purpose 4 in 1 welder
- 4 welding processes in the same welder – MIG, flux-cored, stick and pulse AC/ DC TIG (Lift TIG DC and HF AC/DC TIG) welding.

**BONUS!**

K3096-1 Lincoln Duffle Bag, 71T-GS Gasless MIG Wire 0.8mm x 4.54kg, General Purpose Electrodes 3.2mm x 1kg



SAVE \$150

**\$1849**

20095422

**LINCOLN ELECTRIC**

**POWER MIG WELDER 180C**

Diamond Core Technology™ - Delivers a forgiving arc, excellent out-of-position arc action, low spatter and a wide voltage sweet spot. Industrial Cast Aluminum Drive - Dual gear-driven drive rolls deliver positive traction. No Hassle Tool-less Design - For input power changes, wire spool mounting, wire drive service and polarity changes.

Spool Gun Ready - Just remove the standard MIG gun and plug in the economical Magnum® 100SG spool gun  
Toughest PC Board Protection in the Industry Potted to seal sensitive components from the environment



SAVE \$100

**\$1520**

11800

**LINCOLN ELECTRIC**

**WIRE FEEDER ACTIV8 X SERIES WITH VOTAGE CONTROL**

Portable, semiautomatic wire feeder.

Small enough to fit through manways and light enough to carry around the site, the Activ8X wire feeder also allows remote control of the power source without the need for control cables via CrossLinc Technology. Impact resistant, flame retardant case provides rugged durability for tough conditions. Potted PC Boards for moisture and corrosion protection.

Maxtrac® Wire Drive System – Heavy-duty cast aluminum wire drive system provides reliable feeding and durability. Tachometer feedback delivers accurate wire feed speed. Lightest construction feeder on the market today.



SAVE \$100

**\$3999**

20089208

**LINCOLN ELECTRIC**

**MINARC EVO 140AU VRD MMA /TIG WELDER**

Every element of the Minarc Evo 140 is designed to meet the needs of the professional welder on the move. It delivers outstanding welding quality plus arc ignition. Available for MMA and TIG processes, it combines maximum welding power with high-energy efficiency thanks to the integration of PFC and inverter power technologies. Large voltage reserves and automatic arc force control the large clear meter display. These features provide excellent arc stability in all welding positions and for a wide range of electrode types, making sure you get quality welding results every time. Lightweight and flexible, the Minarc Evo 140 can be used with mains or generator power supplies as well as with long supply cables



**POPULAR**

SAVE \$50

**\$1299**

20092376

**KEMPPPI**

**MINARC EVO 200 ADAPTIVE MIG/MAG WELDER**

Handy, portable and runs off an 8kva generator!

The popular Miniarc Evo offers precise weld quality and arc ignition. 200 or 170 A of MIG/MAG welding power from a 16 A supply.

Choose either Automatic or Manual model. Use with Fe, Fe FCW, Ss, Al, CuSi filler wires, 1 kg and 5 kg spools. With 200 A model, just set the plate thickness and start welding. Large graphical display guides user.

Designed for use with long supply cables of 100 m and more. 3-meter gun, cable set and carrying strap included. Suitable for mains network or generator use.



**POPULAR**

SAVE \$100

**\$2099**

20032128

**THE WELDING CAVE**

Try before you buy.

Talk to our welding specialists about your needs and the latest technology to suit.

Call on 07 4944 3200 to book a time.





**WELDARC 145 AMP ARC & TIG WELDER**

Rural Workshops  
Building & Construction  
General Maintenance  
Light Fabrication Workshops

Compact, lightweight design. 145 Amp Arc & TIG welder, the Weldarc 145i is suitable for onsite and field maintenance.

Suits 2.5 – 3.2mm electrodes. Fan-on-Demand™. Digital Display.

SAVE \$30

**\$319**

20091203



**WELDARC 185AMP ARC & TIG WELDER**

At only 5.5kg, the Weldarc 185i can go wherever the job takes you, making it ideal for onsite maintenance. Portability for onsite & field maintenance. 185 Amp Arc & TIG welder.

Includes: Heavy Duty Work Clamp (3m), Industrial Twist Lock Electrode Holder (4m), Carry Case with Padded Shoulder Strap.

SAVE \$52

**\$399**

20093960

**The Perfect Portable Welder.**



**WELDER 200i AC/DC KIT**

The 200i AC/DC is a highly versatile welding machine that allows you to weld different metals such as stainless steel, copper, and titanium with DC TIG; as well as welding aluminium and aluminium alloys with AC TIG.

**Weldarc 200i Key Features:**

- 200 Amp AC or DC TIG
- AC TIG for Aluminium
- 170 Amp stick welder
- Quality 8m TIG torch with in-built trigger and current control
- HF Pulse start or Lift Arc start
- Pulse TIG
- Compact, lightweight design
- Suits 2-4.0mm electrodes
- 15 Amp supply plug

SAVE \$100

**\$1899**

20077633



**Goes wherever the job takes you!**

**Welding Contractors, Shipyards, Rural Workshops, Mine Maintenance, Motor Sports Fabrication**

**WELDMATIC 270 REMOTE PACKAGE**

**With W64 4rd Wirefeeder**

**Big on Power! Big on Performance!** The Weldmatic 270 has the advantage when it comes to both power and performance. Pumping out a huge 270 Amps of genuine welding power, this machine outperforms the competition when it comes to welding performance.

Spool Capacity: 5kg & 15kg. Welds up to 12mm. Fillet weld up to 12mm of mild steel, stainless steel or aluminium. The low, easy to access rear tray allows the gas bottle to be rolled on and off with ease, eliminating the need for lifting.

Workshops  
Maintenance  
Light Industrial  
Body Shops

POPULAR

SAVE \$100

**\$3399**

22540



**WELDMATIC 500i MULIT PROCESS WELDER PACKAGE**

This 500 Amp three phase multi-process inverter suits MIG, Stick, Arc Air Gouging and Lift-Arc TIG welding and is ideal for medium to heavy fabrication, and all general industrial fabrication applications.

Features allow full control of the arc. Infinite voltage control and arc control to adjust arc harshness, and arc start to control the wire starting speed. Built in VRD delivers added safety when operating in Stick or Lift-TIG mode and meets the requirements of site work.

Optimal weld characteristics provide high quality results on steel, stainless steel and aluminium, plus the power to comfortably run all popular sizes of solid and flux cored wires. With the capacity to run 1.6mm flux cored wire, the 500i can handle a wide range of applications.

SAVE \$250

**\$4789**

**HOT PRICE!**

20077105





**TRANSSTEEL 220C**

The TransSteel 2200 is a compact 3-in-1 solution. It is the first single-phase inverter power source from Fronius that is also multiprocess-capable, bringing together MMA, MIG/MAG and TIG in a single device. The TransSteel 2200 is characterised by the intelligent design of the device, ease of use, robustness and a high level of reliability. Weighing only 15.5 kg, it is also one of the lightest devices on the market.



SAVE \$200  
**\$6459**  
HOT PRICE!

20086932

**TPS270IC PULSE MIG WELDER**

All the advantages of the TPS/i range in an even more compact design. Compact dimensions and built-in wire feeder make this machine space-saving, portable and yet extremely powerful for construction sites and workshops in particular and are the ideal partners for carrying out repair work and maintenance tasks.

Every welding process – from MIG/MAG (steel, Cr Ni, aluminium application) and MIG brazing to TIG DC and MMA can be carried out using a single unit thanks to the multi process capability. A plethora of options, such as a TIG installation kit or a polarity reverser for welding special flux core wires, provides even greater flexibility to this unbelievably wide range of applications.



SAVE \$200  
**\$12064**  
HOT PRICE!

20086947

**DUNLITE HONDA POWERED 7KVA /200AM GENERATOR WITH E-START**

This welder generator is tough and powerful. With a 7kVA alternator and 200AMP Welder it has everything you need for portable off grid welding. Tough but portable, Dunlite Honda powered generators will meet your needs at home, in the shed, on the back of the ute or for the worksite.

A popular choice and a great all-rounder. From the building site to the workshop or the farm, this handy generator will get most jobs done without a hitch, for reliable power when you need it most.

Power Rating: 7 kVA  
Cont. Output Watts: 6000  
Engine Model: Honda GX390  
Phase: Single  
Starting System: Recoil  
Fuel Tank Capacity: 6.5 L  
Noise Level @ 7m: 76 dBA

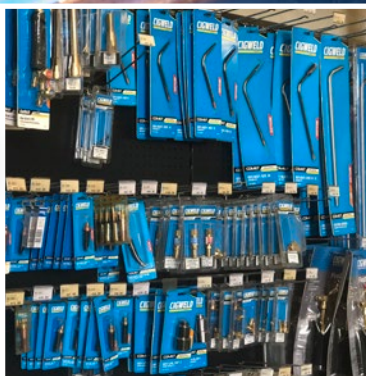
Outlets: 2 x 15 Amp plugs  
Welder: 200 Amps  
Duty Cycle: 60%  
Operation Hours @ 80% Load: 2.8 hrs  
Fuel Type: Unleaded  
Diam.: 810 x 520 x 525 mm (L x W x H)  
Weight: 100 kg



SAVE \$100  
**\$2749**

20000012

**EVERYTHING  
YOU NEED FOR  
WELDING  
AND MORE!**





**GENERATORS**

**HONDA 2.8KVA 2300W GENERATOR**

2.8kVA / 2300W power rating @ 80% load. Tough, sturdy frame  
NSM brushless alternator, Reliable Honda GP200 engine  
Power rating: 2.8 kVA @ 0.8 pf  
Continuous output: 2300 W  
Engine: Honda GP200  
Starting system: Recoil  
Fuel tank: 3.6 Litre  
Fuel type: Petrol  
Dry weight: 31 kg  
Dimensions: 650L x 460W x 415H mm  
Noise level: 67 dBA @ 7m



SAVE \$100  
**\$639**

20081651

**YAMAHA 1KVA(1000 WATT) INVERTER GENERATOR**

Light weight and user friendly. Built for the outdoors. It is great for RV owners and outdoors enthusiasts alike.

The 50cc 4-stroke OHV air cooled single cylinder engine has a max AC output of 1000 watts. The engine speed is variable and automatically adjusts to precisely match load, this results in greater fuel efficiency and noise reduction. Large fuel tank means it can run up to 12 hours. 4 year warranty.



SAVE \$229  
**\$1600** **HOT PRICE!**

14312

**YAMAHA 2.2KVA SILENT INVERTER GENERATOR**

High power, sophisticated quiet technology, rich features, and a rugged design. It weighs a mere 55 lbs., and with the tri-handle design is easy to transport.

Maximum AC Output: 2200 watts  
Rated AC Output: 1800 watts  
Rated / Maximum AC Current: 15 / 18.3 amps @ 120V  
Engine: OHV, air-cooled, single cylinder, 4-stroke  
DC Output: 3 amps @ 12V  
Continuous Operation at 1 / 4  
Rated Load: 10.5 hrs



SAVE \$169  
**\$2030**

20092856

**HONDA 5.8KVA PETROL GENERATOR GX340 RECOIL START**

Power Rating: 5.8 kVA, 4800 Output Watts  
Honda GX340 Engine, 1- Phase.

Recoil Starting System, 6.1 L Fuel Tank,  
Noise Level @ 7m: 68 dBA,  
Outlets: 2 x 15 Amp plugs  
Fuel Consumption @ 80% Load: 2.35 L/Hr  
Operation Hours @ 80% Load: 2.6 hrs  
Unleaded Fuel.  
Diam.: 735 x 545 x 545 mm (L x W x H)  
Weight: 70 kg



SAVE \$50  
**\$2079**

20064877

**DUNLITE 8KVA PETROL GENERATOR**

Power Rating: 8 kVA, Cont. Output Watts: 6000, Fuel Tank Capacity: 6.5 L  
Engine Model: Honda GX390  
1-Phase, Starting System: Recoil  
Noise Level @ 7m: 76 dBA  
Outlets: 2 x 15 Amp plugs  
Operation Hours @ 80% Load: 2.8 hrs  
Fuel Type: Unleaded  
Diam.: 810 x 520 x 525 mm (L x W x H)  
Weight: 80 kg



SAVE \$200  
**\$2299** **HOT PRICE!**

20079509

**YAMAHA 2.4 KVA SILENT INVERTER GENERATOR**

Light and super quiet, the EF2400IS produces a massive 2400 watts of maximum power and comes with TwinTech capability to offer additional power when needed.



SAVE \$200  
**\$2599** **HOT PRICE!**

14313

**HONDA 15 KVA PETROL GENERATOR CX690 ELEC START**

The heavy duty range of Dunlite generators are designed specially for rugged Australian use. Ideal for large property owners and tradespeople alike. Powered by a gutsy Honda engine these generators are ideal for running power tools, hand tools, large electric motors.

Power Rating: 15 kVA  
Cont. Output Watts: 12000  
Engine Model: Honda GX690 V-Twin  
Phase: 1-Phase  
Starting System: Electric  
Fuel Tank Capacity: 34 L

Noise Level @ 7m: 75 dBA  
Outlets: 2 x 15 Amp plugs  
Approx. Fuel Consumption @ 80% Load: 5.66 L/Hr  
Operation Hours @ 80% Load: 5.66 hrs  
Fuel Type: Unleaded  
Diam.: 876 x 546 x 700 mm (L x W x H)  
Weight: 160 kg

**HOT PRICE!**  
SAVE \$690!!

**\$5499**

20094929  
Only One Available







## COMPRESSORS

### P14 ELECTRIC COMPRESSOR

This unit is suited to industrial applications as well as the serious home handyman. The P14 is the largest 10AMP compressor on the market giving 275 Litres per minute of free air delivery.

Free Air Delivery (F.A.D) 275 LPM @ 100PSI  
Cylinders 2, Max. PSI 145, Motor Electric 2.75 HP  
Pump N75, Pump RPM 852, Power Supply 10 AMP

SAVE \$100

**\$1689**

12606



### P17 ELECTRIC COMPRESSOR 15AMP

Air Delivery 320 LPM @ 100PSI, Cylinders 2  
Max PSI 145, Electric Motor 3.5HP  
Offers 320 Litres of free air delivery.  
Runs die grinders, most common air sanders and 3/4" impact guns. All the standard features of the P14 are incorporated.  
Dimensions 1050MM x 430MM x 770MM  
Weight: 85KG

SAVE \$240

**\$1799**

12601



### HIGH PRESSURE FATBOY COMPRESSOR 300LPM 15AMP

Air Delivery: 300 LPM @ 150PSI  
Max PSI: 175, Electric Motor 3.5 HP  
Has all the performance and standard features as the standard PHP15 but is mounted on a 110 litre horizontal air receiver with pallet feet. Very popular in workshops where only single phase power is available.  
Dimensions 1300mm x 400mm x 840mm

SAVE \$100

**\$2377**

12603



### P17 PETROL BELT DRIVE COMPRESSOR

Air Delivery 350 LPM @ 100 PSI  
Max PSI 145, Motor GX200 (6.5) HP  
With performance of 350 litres of free air, this is the largest petrol model you can buy with a GX200 (6.5HP) Honda engine. Super quiet and efficient for the amount of air you receive.  
Runs die grinders, most common air sanders and 1/2" impact guns.  
Dimensions 1100mm x 450mm x 820mm

SAVE \$69

**\$2980**

12621



### HIGH PRESSURE PETROL COMPRESSOR PHP15

Air Delivery (lpm) 350 LPM @ 100PSI  
Max PSI 145, Honda GX200 (6.5HP) Motor  
Portable and capable of running at 175PSI.  
Fantastic for tyre inflation i.e. truck tyres or applications where large volumes of air at high pressure is required. Two-stage compressor means no loss of air volume higher pressure. Dimensions 1250mm x 450mm x 820mm

SAVE \$500

**\$3389**



20027160



### REFRIGERATION CYCLE DRYER - MAXIMUM 13BAR, 1000LPM

High efficiency condenser & evaporator. Low dew point. High quality electronic auto drain  
Low in maintenance. Long life span, Great Reliability  
Free Air Delivery: 1000, Compressor (HP): 1/2HP  
Working Pressure: Min. 6 Bar Max. 13 Bar  
M3/H: 60, CFM: 35.5, Air In / Out Thread: 1/2" BSP  
Dimensions: 352mm x 430mm x 445mm  
Weight: 30kg

SAVE \$200

**\$2419**

20097253



### 3HP SINGLE PHASE SCROLL COMPRESSOR | 320LPM @ 8BAR

Air Delivery: 320LPM  
Max PSI: 120 PSI  
Motor: 3 HP  
This compressor delivers 320 litres of air (Free air delivery measured at 8 Bar/116PSI) with an oil-less air flow, making it well suited for spray painting, breathable applications along with medical equipment operations with further filtration and much more.

SAVE \$200

**\$5799**



20097251



### 10HP VARIABLE SPEED ROTARY SCREW COMPRESSOR

Air Delivery: 1000 LPM @ 116PSI (8 BAR)  
Max PSI: 188.5 (13 BAR)  
This Full Feature models is the ultimate space saver with the screw component and air dryer situated on top of a 200L air receiver in order to properly utilise valuable floor space.  
Power Supply: 415V, Tank Size: 200L  
Dimensions: 1690MM x 560MM x 1450MM  
Weight: 350KG, Stationary Model  
Pump Warranty: 1 Year, Motor Warranty: 1 Year

SAVE \$1,679

**\$13,500**



20097252





**MATES RATES SPECIAL**  
**5% OFF RRP\* ON ALL**  
**KINCROME**



\* Open to Mates Rates Members. Discount off RRP only. Where an item is on special, you will receive the lower of the two prices. Ends June 30th, 2022

**VACUUM WET & DRY WORKSHOP 50L 240V/1400W**

Capacity 50L  
Motor 1400W  
Flow Rate 40LPS  
Voltage 240V  
Power Cable Length 5M  
Material Stainless Steel Tank  
Noise Level 76dB



SAVE \$80

**\$249**

20071518

**300PCE 4 DRAWER SUPATool TOOL KIT**

Ideal for the home workshop, this comprehensive range of popular tools comes complete with a 4 drawer tool chest  
PVC trays for pliers and spanners  
Includes a brass padlock  
Manufactured from Forged Carbon Steel, hardened and tempered



SAVE \$50

**\$269**

20078896

**94 PIECE PORTABLE WORKSHOP**

This portable toolkit contains 94 of the essential tools. Featuring 1/2" square drive sockets and accessories, combination spanners and a variety hex keys, knives, pliers and more. Ideal for a tradesperson who may be offsite and working remotely or it could be the go to kit for your home garage. This kit packs the punch with the essentials tools, all conveniently packed in one compact blow mould case.



SAVE \$29

**\$410**

20094734

**TRUCK BOX 3 DRAWER - GREY**

Heavy Duty Gauge sheet steel lid with piano hinge  
Grey Hammertone UV stabilised powder coat finish (for rust and corrosion protection). 2 x internal lift  
lower storage well. 3 x full sized drawers with chrome plated  
drawer pulls and 4 big handles for easy carrying. Security  
hasp and padlocks (not included).  
The Truck Box is weather resistant and suitable for use in  
gutters in



SAVE \$80

**\$720**

122001518

**UNAVAILABLE**

**EVOLUTION TOOL WORKSHOP 306 PIECE 14 DRAWER**

92 Piece Sockets, 36 Piece Hex Key, 4 Piece Plier, 30 Piece Combination Spanner, 75 Piece TORQUEMASTER® Screwdriver, 19 Piece Striking, Heavy Duty Hack Saw, Xtenda Tape Measure 8m Folding Utility Knife, Lock Grip Plier 250mm (10"), Adjustable Wrench 250mm (10"), LOK-ON Impact Socket Set 12 Piece 1/2" Drive, 4 Piece Mini Hook & Pick Set, 11 Piece Tamperproof TORX® Set, 11 Piece TORX® Socket Set.



SAVE \$300

**\$2199**

**HOT PRICE!**

20087508

**312 PIECE 14 DRAWER EVOLUTION WORKSHOP**

312 Piece Metric & SAE 14 Drawer EVOLUTION Workshop Tool Chest & Roller Cabinet Tool Kit. Everything you need for the workshop or onsite.



SAVE \$200

**\$2799**

**HOT PRICE!**

20093573

**CONTOUR TOOL WORKSHOP 329 PIECE 14 DRAWER**

The CONTOUR range of Tool Kits, Chests and Trolleys is a premium level range, developed for those looking for trade quality tools and features. CONTOUR storage comes standard with a range of premium features, including; the chamfered Kinchrome embossed side panels, Automatic Drawer Retention System (ADRS) locking system, heavy duty Big Grip side carry handles and a contoured trolley handle, side folding work trays, MDF worktop and four swivel heavy duty polyurethane castors for easy manoeuvrability.



SAVE \$500

**\$2999**

**HOT PRICE!**

20029712

**DOMINATOR TOOL WORKSHOP 601 PIECE 13 DRAWERS**

601 Piece tool kit with 13 drawers. Manufactured from heavy gauge steel  
Gloss black UV stabilised powder coat  
Blacked out locks, castors and handles  
DOMINATOR badges.

1 ONLY AVAILABLE

**HOT PRICE!**

SAVE \$1000!

**\$3999**

20095949







70 YEARS OF INNOVATION

### WEED/PESTICIDE HOSE REEL WP100 10MMX16M HOSE

High Quality Weed Chem Hose in a UV Stable, impact resistant case with RETRACTA R3 Premium spring rewind reel. Wear Resistant Pro-Glide™ mouth Premium German engineered Main Spring. Fully Serviceable

**Specifications:**

Hose Size - 3/8" x 16m, Type - Ag Chem  
Inlet/Outlet - 3/8"/3/8" BSP  
Pressure Rating - 150 psi  
Hose Material - Chem resistant PVC



SAVE \$200  
**\$259**



20034522

### RETRACTABLE AIR/WATER REEL BLUE 10MM X 15M HOSE

RETRACTA R3 Standard spring rewind reel c/w 15m x 3/8" Std Air hose, Blue case. Hose Size - 3/8" x 15m  
Hose Type - Compressed Air/Water  
Inlet/Outlet - 3/8"/1/4" BSP  
Pressure Rating - 250 psi.  
Hose Material - Reinforced PVC

SAVE \$152  
**\$290**



11981

### ARGON REEL RETRACTA R3 1/4 X 20M

High-quality Reinforced Rubber (AS1335) UV Stable, impact-resistant case. Wear Resistant Pro-Glide™ mouth. Fully Serviceable  
Hose Size - 5mm (3/16") x 20m  
Welding Gas - Argon, Pressure Rating - 200psi  
Inlet/Outlet - Gas Thread  
Hose Material - Reinforced Rubber (AS1335)

SAVE \$30  
**\$369**



20090203

### RETRACTA R3 AIR REEL 1/2 X 15MTR

High Quality Std Air Hose, UV Stable, impact resistant case. Wear Resistant Pro-Glide mouth. Premium German engineered Main Spring. Fully Serviceable  
Hose Size - 1/2" x 15m, Type - Compressed Air/Water  
Inlet/Outlet - 3/8"/3/8" BSP, Pressure Rating - 250 psi.  
Hose Material - Reinforced PVC

SAVE \$100  
**\$479**



20086577

### RETRACTA R3 WELDING GAS LPG REEL

High-quality Reinforced Rubber (AS1335), UV Stable, impact-resistant case, Wear Resistant Pro-Glide mouth. Premium German engineered Main Spring. Fully Serviceable.  
Hose Size - 5mm (3/16") x 20m, Type - Welding Gas - LPG  
Inlet/Outlet - Gas Thread, Pressure Rating - 200psi

SAVE \$100  
**\$739**



20090204

### RECHARGEABLE MULTI-FUNCTION LED WORK LIGHT SET

Hard moulded case with different light options, Charger, USB Cable and operation sheet. Multi-function Work light Torch Base can be connected to either torch head, flexible inspection light or work light. Max Output - 350 Lumens.

SAVE \$45.99  
**\$189**



20095341

### FLEXIGUN 450G GREASE GUN

Variable stroke piston and valve arrangement for one handed operation. Push in handle is easy to use and requires less effort to operate. Increased pressure can be produced by short strokes (low volume) or high volume using a long stroke (low pressure). Heavy duty pistol grip construction with comfortable ergonomics to suit 450g grease cartridges, bulk filling or Macnaught J3 grease transfer pump loading. Fully repairable with a strong die cast head and heavy gauge steel barrel for extra long service life.

SAVE \$50  
**\$159**



17066

### RECHARGEABLE SLIM LINE WORK LIGHT LED

4 Modes of LED Light Main Light/Red Light/Top Light and Spot light. Dimming Function on Main Light and Spot Light. Battery Indicator light at the back. 180 rotatable Main light. Magnetic top light to pick up screw or small metal pieces. Strong Magnetic base with Hanging Hook. Retractable base which can extend up to 40mm

SAVE \$35.99  
**\$89**



20095339

### LEVERGUN 450G GREASE GUN

Designed for high pressure/high volume greasing. Durable die cast aluminium head, a heavy gauge steel barrel and a heavy duty follower assembly. to handle a wide range of grease viscosities up to NLGI No 2. Comes with 150mm (6") rigid high pressure extension and KY SUPERGRIP coupler.

SAVE \$60  
**\$139**



17070

### LED INSPECTION LIGHT RECHARGEABLE

Main Light: Max. 400 Lumens. Strong Magnetic Base at the bottom. 180 Adjustable Handle for easy handling. 2 x Adjustable Hooks for easy and sturdy hanging. 2 x Strong Magnets on the back for flexible placements. USB Charging Socket. LED Charging Indicator Red when charging/Green when full

SAVE \$42.99  
**\$82**



20095339